

# PULTE HOMES at CROWN

Urban 16' Wide 4 Story 1 Car Garage Townhomes

Patrice Hutchinson and Sandy Thongphok: (301) 977-4628

---

**TO-BE-BUILT HOMES AVAILABLE FOR SPRING/SUMMER 2015 MOVE-IN!**

## **Ardin**

**Starting at \$558,800\***

**2,002 + Square Feet**

**3-5 Bedrooms, 2.5 Baths-4.5 Baths, 1-Garage w/covered driveway**

- **Convenient Main Level Front Entry**
- **Oak Staircase on Main Level w/carpet runner**
- **Dedicated Owner's Suite with Loft**
- **Finished Lower Level Rec Room**
- **Spacious 10'x12' Main Level Deck**
- **Third Floor- Oversized Bedrooms**

## **Ardin w/ Rooftop Terrace**

**Starting at \$599,312\***

**1900-1950 Square Feet**

**3-4 bedrooms, 3.5 baths-4.5 baths, 1-Garage w/covered driveway**

- **Main Level Front Entry**
- **Oak staircase on main level w/carpet runner**
- **Owners suite and Guest suite on Second Level**
- **Roof top terrace and Game Room on third floor**
- **Finished Rec Room**
- **Spacious 12 x 10 Deck**

**\*starting prices do not include options**

All pricing and availability subject to change without notice. 9/28/14

# PULTE HOMES at CROWN

Urban 16' Wide 4 Story Garage Townhomes

Patrice Hutchinson and Sandy Thongphok : 301-977-4628

---

**LAST AVAILABLE CARSON HOMES- QUICK MOVE-INS!**

## Corner Home- Homesite 10

106 Strummer Lane

**WAS-\$649,419 NOW-\$635,000**

**Approx. 1950 Sq. Ft. 3 bedrooms with 3.5 baths**

End home with bump outs, includes a fully upgraded kitchen with KitchenAid Stainless Steel appliances, maple cabinets in chiffon, quartz countertops, designer ceramic backsplash. Upgraded 5" Oak hardwood throughout main level and on 4<sup>th</sup> floor game room. Oak stairs with designer iron railings, enhanced trim package and upgraded wiring.

**Move In Ready!**

## Interior Home- Homesite 22

119 Decoverly Drive

**WAS- \$602,362 NOW-\$592,362**

**Approx. 1900 sq. ft. 3 bedrooms with 3.5 baths**

Lovely interior home with an upgraded kitchen that includes Sable maple cabinets, stainless steel appliances, granite countertops and ceramic backsplash. Oak stairs throughout home includes carpet runners and designer iron railings.

Includes upgraded ceramic bathroom tiles and more.

**Move In Ready!**

**\$15,000 toward closing cost assistance\***

Prices, terms, and availability may change without prior notice. MHBR #516. 11/14

\*restrictions may apply



Built from the idea up.

PULTE.COM

# INCLUDED FEATURES IN YOUR NEW PULTE HOME

## Crown

### INTERIOR APPOINTMENTS

- 9' ceilings on the main and lower levels
- Hardwood flooring in the kitchen and powder room
- Two-panel interior doors
- Schlage® polished chrome door hardware
- Cable TV and telephone connections
- Smoke detectors installed on each level and in all bedrooms

### EXTERIOR DESIGN

- Partial masonry fronts
- HardiePlank® siding
- Professionally landscaped and sodded homesites
- Professionally designed exterior color packages
- Convenient exterior outlets and frost-proof hose bib
- Concrete leadwalk and asphalt driveway
- Brick stoops

### CHEF'S KITCHEN

- 42" Merillat® flat panel birch cabinets
- Granite countertops
- Moen® faucet
- Undermount stainless steel sink
- Whirlpool® appliance package in your choice of black or white
- Shaw® hardwood flooring

### DELUXE BATHS

- 6" x 6" ceramic tile shower/tub surrounds
- Merillat® birch vanity cabinets in all full baths
- Pedestal sink in powder room
- Moen® polished chrome faucets
- Hardwood flooring in the powder room
- 12" x12" ceramic tile flooring in all full baths
- Cultured marble vanity tops

### ENERGY FEATURES

- HERS rated homes
- Upgrade airseal package
- CPVC water distribution system and insulated hot water pipes
- Lennox® 90% efficient gas heating
- Lennox® 13 SEER electric air conditioning system
- Single hung low "E" windows with insulated glass
- 50 gallon natural gas hot water heater
- 100% CFL bulbs throughout
- Honeywell® programmable thermostat

### PULTE HOMES CUSTOMER CARE AND WARRANTY

- Pulte Homes protection plan featuring our 1-2-5-10 warranty program
- Centralized customer care department with 24-hour emergency line
- In-house mortgage company and settlement services



Built from the idea up.

PULTE.COM

Pulte Homes reserves the right to change, upgrade or alter its plans, specifications, materials and prices without prior notice or obligation. See Sales Representative for details. Options as indicated are available at additional cost and may not be available in all locations. This brochure is for illustrative purposes only and is not part of a legal contract. MHBR#516 ©2013 Pulte Home Corporation. All rights reserved. 6/2014



## PULTE HOMES at CROWN

### New Home Buying Process Made Easy!

- Build Your New Home on Paper with options of your choice to arrive at likely purchase price if choosing a later delivery
- Run Affordability Scenario to determine monthly payment on purchase price
- Sign Purchase Agreement and provide Earnest Money Deposit (\$27,000)
  - All that is needed at this time is home site, exterior style and structural selections. All finishes will be added at your Design appointment in Fairfax VA.
- Complete online Pulte Mortgage Application (if financing purchase) 3 days from Purchase Date.
- Schedule and complete new home design appointment w/in 30 days of contract (if applicable). Designer will contact you to schedule.
  - Option Deposit is due-50% of interior finishes over \$40,000
- Attend Pre-Construction Orientation (1 hr) Sales Consultant will contact you to schedule
- Attend Pre-Drywall Orientation (1 hr) Construction Field Manager will contact you to schedule
- Schedule Pre-Settlement Orientation and Settlement (30 days out) Closing Coordinator will contact you
- Attend Pre-Closing Orientation-takes place roughly 3-6 days prior to settlement date at your new home.
- Settlement-PGP Title or Title Company of your choice
- Begin moving into new home!
- Celebrate 😊



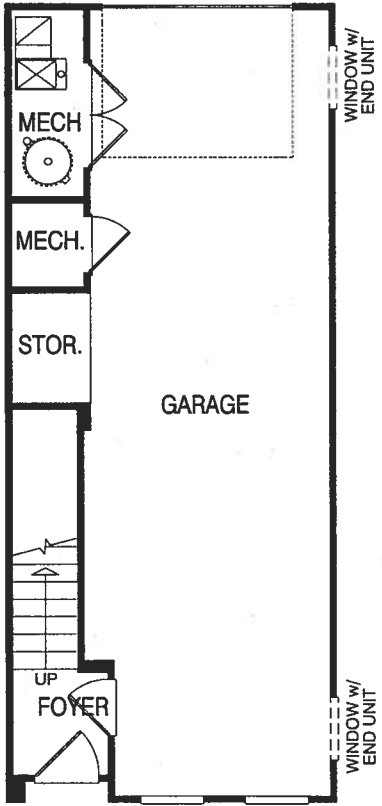
Built from the idea up.

PULTE.COM

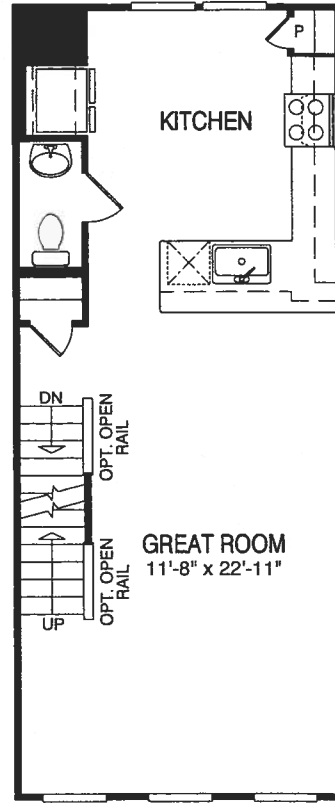
# Carson

3 Bedrooms, 3 Full Baths & 1 Powder Room

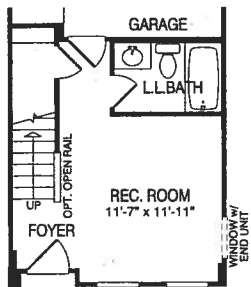
## First Floor



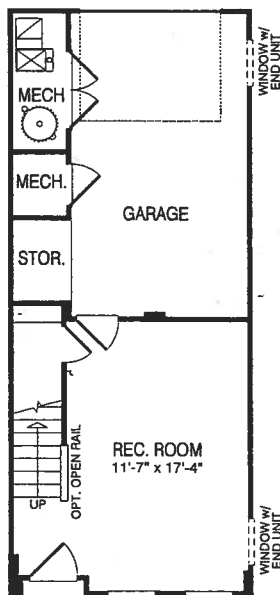
## Second Floor



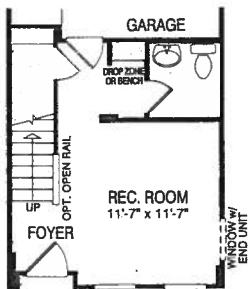
## First Floor Options



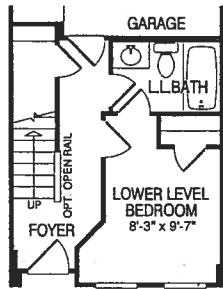
Opt. Rec. Rm.  
w/Opt. Lower  
Level Bath



Opt. Rec. Rm.

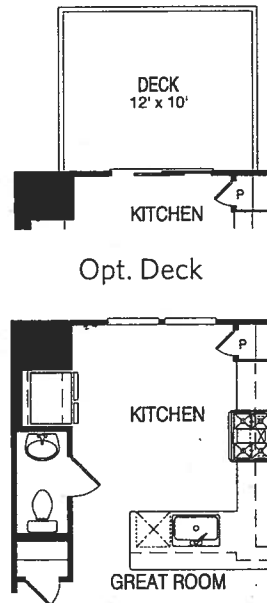


Opt. Rec. Rm. w/Opt.  
Lower Level Powder Rm.



Opt. Lower Level Bedrm.  
w/ Opt. Lower Level Bath

## Second Floor Options



Opt. Gourmet  
Kitchen

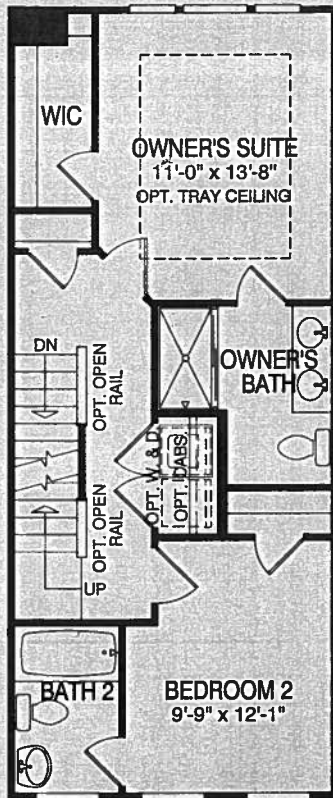


Opt. End Unit  
Elevations  
#2, 15, 16 & 18

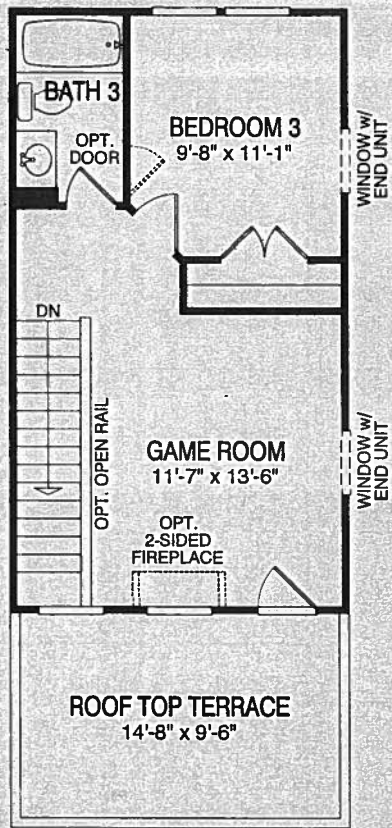


Opt. End Uni  
Elevation #1

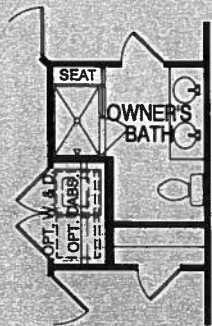
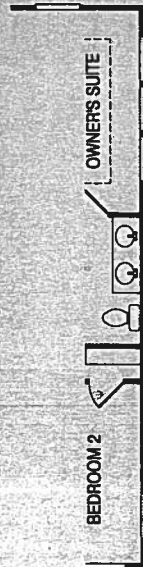
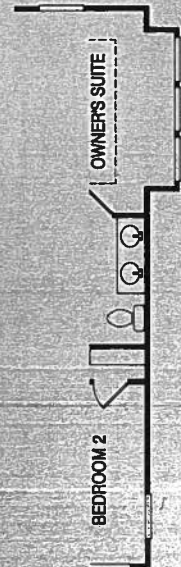
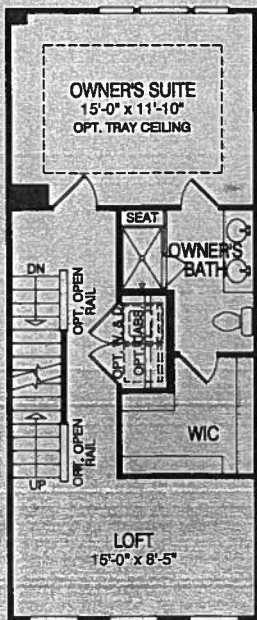
### Third Floor



### Fourth Floor



### Third Floor Options



Alternate Owner's Bath

Opt. End Unit Elevations #2, 15, 16 & 18

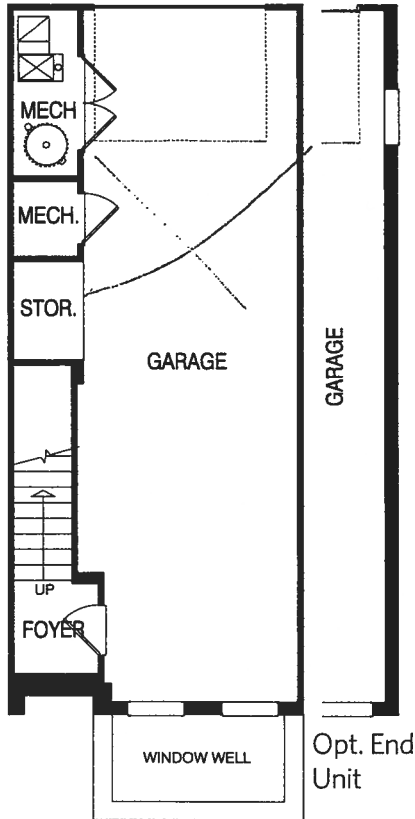
Opt. End Unit Elevation #1

Alternate Third Floor

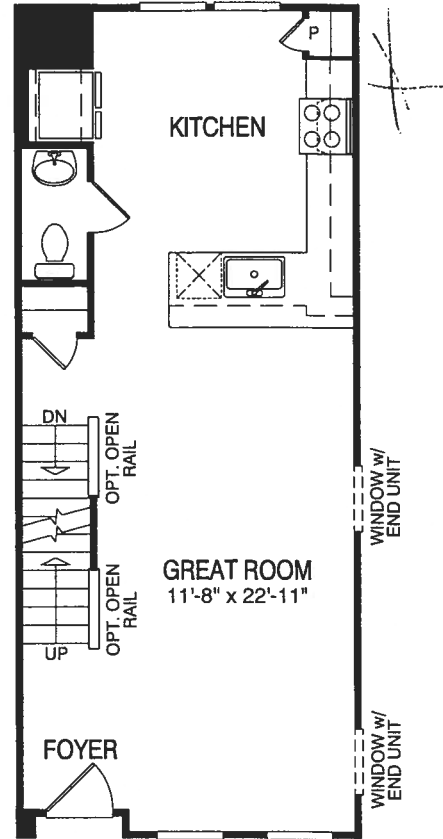
# Ardin

3 Bedrooms, 2 Full Baths & 1 Powder Room

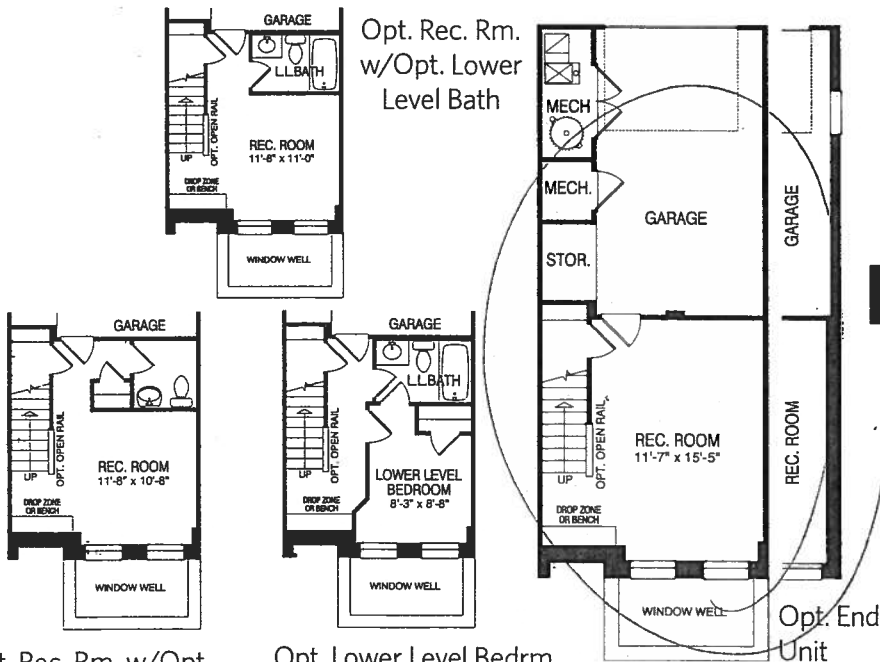
## Lower Level



## First Floor



## Lower Level Options

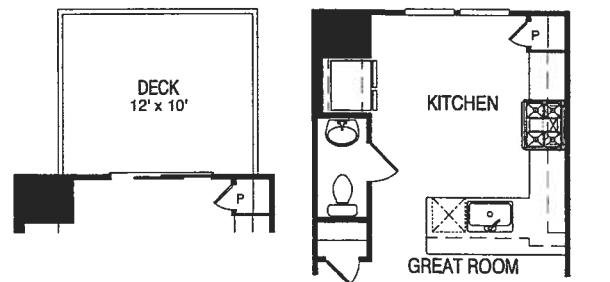


Opt. Rec. Rm. w/Opt. Lower Level Powder Rm.

Opt. Lower Level Bedrm. w/ Opt. Lower Level Bath

Opt. Rec. Rm.

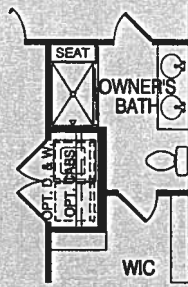
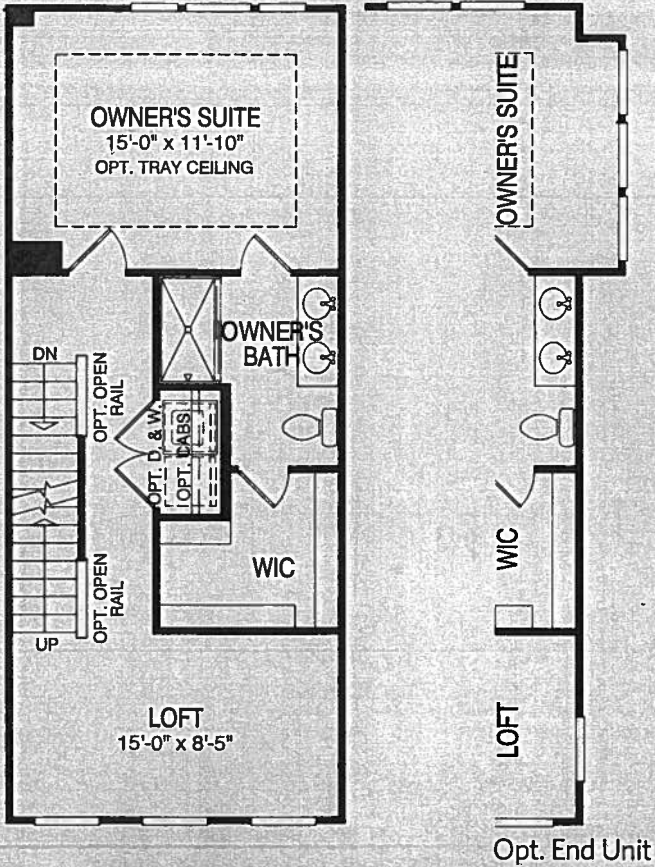
## First Floor Options



Opt. Deck

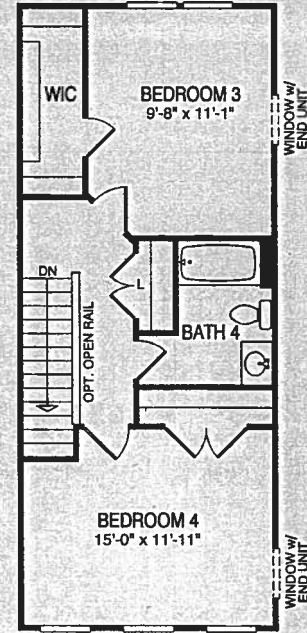
Opt. Gourmet Kitchen

## Second Floor



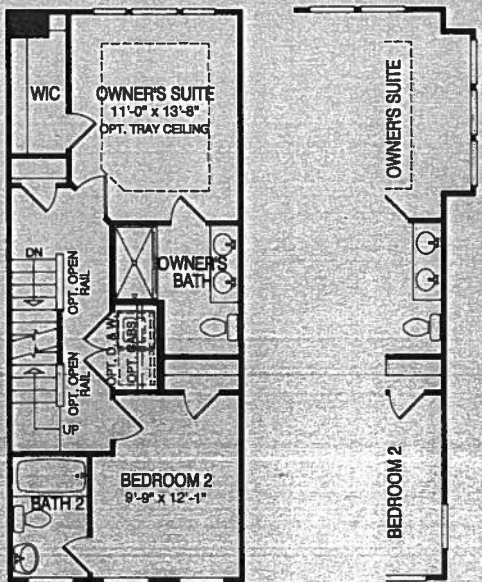
Alternate Owner's Bath

## Third Floor

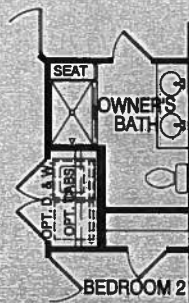


Third Floor  
w/ Elevations #7, 8, 9, 10, 11

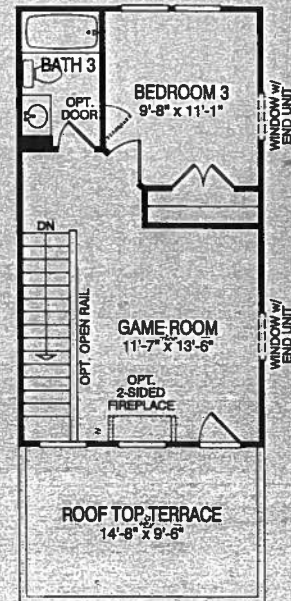
## Second Floor Options



Alternate Second Floor



Alternate Owner's Bath



Third Floor  
w/ Elevations #12, 13, 14